

Neshaminy School District
PURSHASING DEPARTMENT
2001 Old Lincoln Highway
Langhorne, PA 19047



**Addendum No. 1 dated January 10, 2023
For
Bid #23-17**

Request for Interest by Purchaser/Developer – Oliver Heckman Elementary School

The following items are clarifications, additions, and/or revisions to the original Bid documents. This Addendum forms a part of the Contract Documents for the above referenced project, and hereby modifies and takes precedence over the original Bid documents as though originally included therein. Proposers shall acknowledge receipt of this Addendum by indicating the Addendum number and date in your Proposal cover letter.

1. Attached is section XI. Plan of Site and Building
2. Attached is section XII. Location Map
3. The due date will be extended to Tuesday, February 28, 2023 at 10:00 AM in the same location as noted in the solicitation.

Please sign and send this back with the solicitation packet and make sure you keep a copy for your records.

Signature_____Date_____

Oliver Heckman School

AERIAL MAP






09/02/2021

22-027-008-001



8/10/2022, 4:52:30 PM

 Municipal Boundary  Bucks County Parcels
 Parcel Annotation

1:2,257
0 0.01 0.03 0.05 mi
0 0.02 0.04 0.09 km




Esri Community Maps Contributors: Bucks County, PA; Mercer County, NJ; data.pa.gov; New Jersey Office of GIS; © OpenStreetMap; Microsoft; Esri; Bucks County

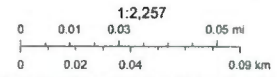
Esri Community Maps Contributors: Bucks County, PA; Mercer County, NJ; data.pa.gov; New Jersey Office of GIS; © OpenStreetMap; Microsoft; Esri; HERE; Garmin; SafeGraph; GeoTechnologies, Inc; METI/NASA; USGS; EPA; NPS; US Census Bureau; USDA; See

22-021-079-001



8/4/2022, 8:37:21 AM

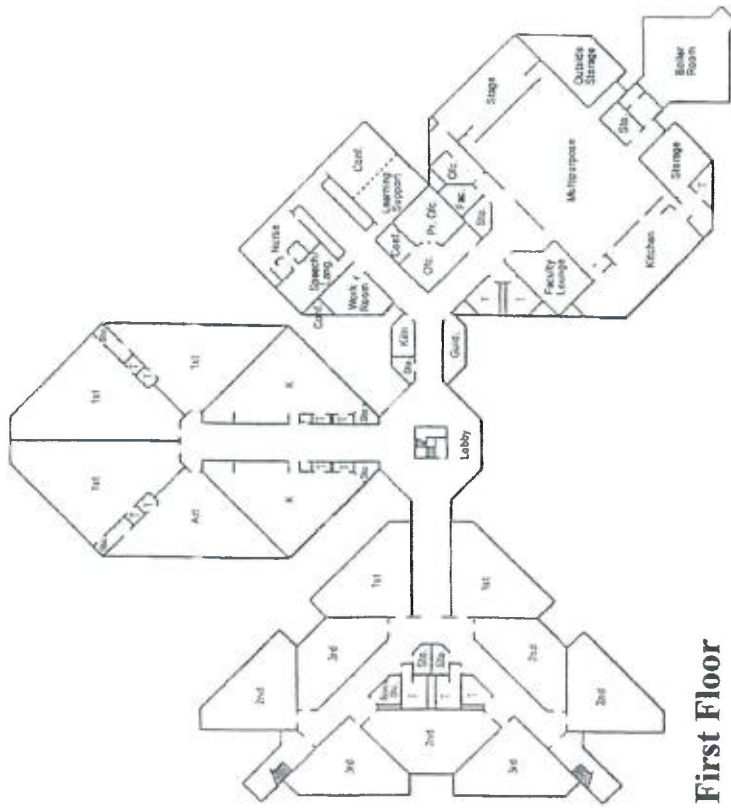
 Municipal Boundary  Bucks County Parcels
 Parcel Annotation



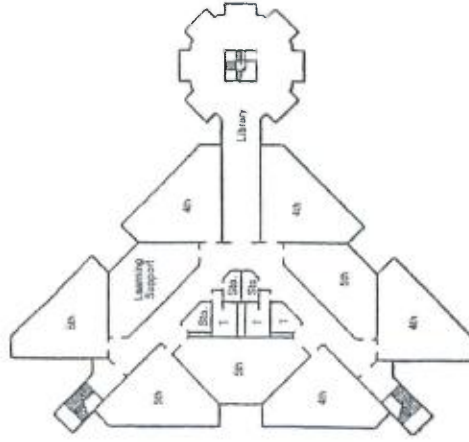
Esri Community Maps Contributors, Bucks County, PA, Mercer County, NJ, data.pa.gov, New Jersey Office of GIS, © OpenStreetMap, Microsoft, Esri, HERE, Garmin, SafeGraph, GeoTechnologies, Inc., METI/NASA, USGS, EPA, NPS, US Census Bureau, USDA | See

Bucks County
Esri Community Maps Contributors, Bucks County, PA, Mercer County, NJ, data.pa.gov, New Jersey Office of GIS, © OpenStreetMap, Microsoft, Esri, HERE, Garmin, SafeGraph, GeoTechnologies, Inc., METI/NASA, USGS, EPA, NPS, US Census Bureau, USDA | See

Oliver Heckman Elementary



First Floor



Second Floor



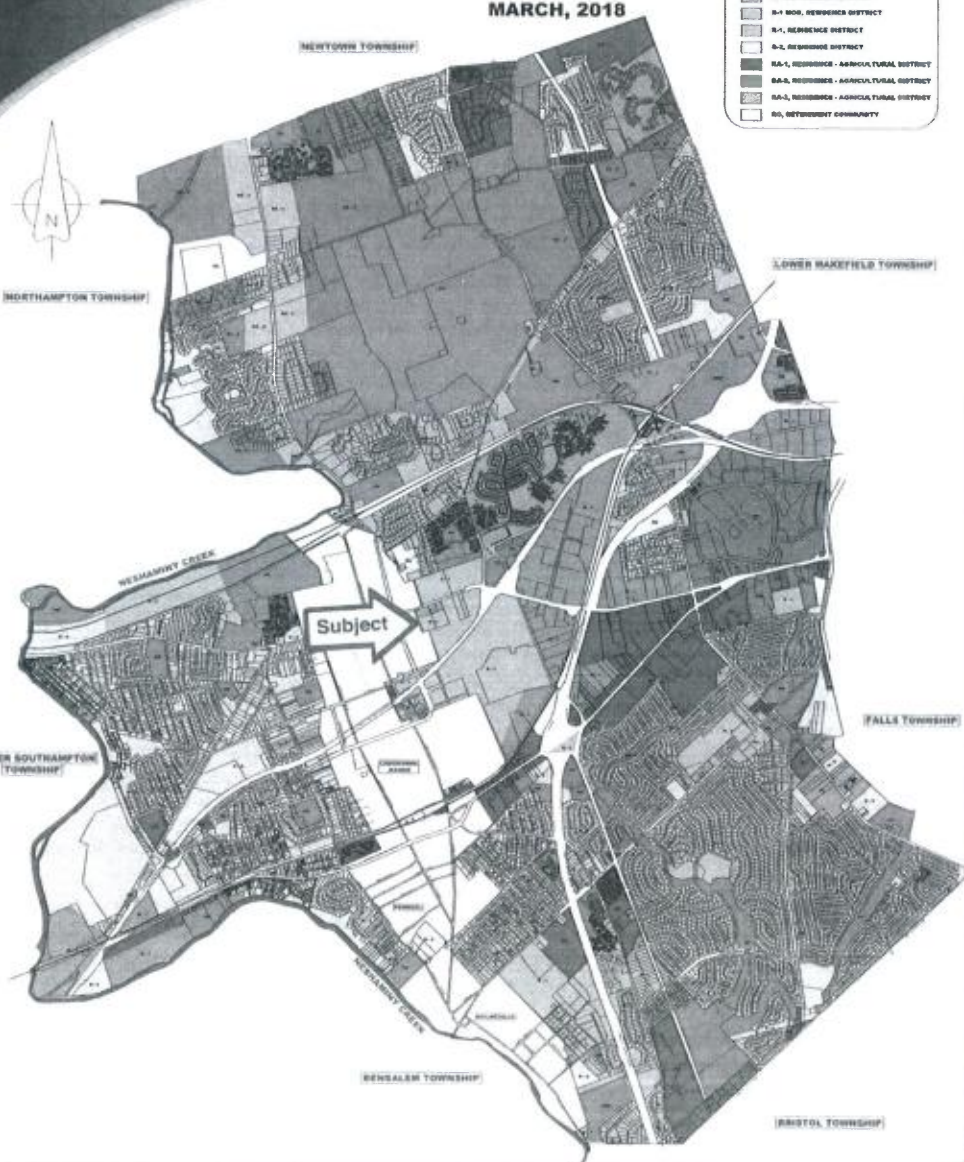
MIDDLETOWN TOWNSHIP

ZONING MAP

MARCH, 2018

ZONING LEGEND

- AO, APARTMENT - OFFICE DISTRICT
- ADC, ADULT QUALIFIED COMMUNITY
- C, COMMERCIAL DISTRICT
- CS, SHOPPING CENTER DISTRICT
- SB, GENERAL BUSINESS DISTRICT
- SL, LIGHT MANUFACTURING DISTRICT
- MHP, MOBILE HOME PARK
- MR, MULTI RESIDENTIAL DISTRICT
- OR, OFFICE CAMPUS
- OR, OPEN RECREATION DISTRICT
- P, PROFESSIONAL DISTRICT
- R-1 MOB, RESURGE DISTRICT
- R-1, RESURGE DISTRICT
- RA-1, RESURGE - AGRICULTURAL DISTRICT
- RA-2, RESURGE - AGRICULTURAL DISTRICT
- RA-3, RESURGE - AGRICULTURAL DISTRICT
- RC, RETICULATED COMMUNITY



ZONING MAP

OF
LANGHORNE BOROUGH
Bucks County, Pennsylvania

NOVEMBER 3, 1978

- R1 Residence
- R2 Residence
- C Commercial
- C1 Commercial
- PS Professional Service
-  Historic District
-  Floodplain

