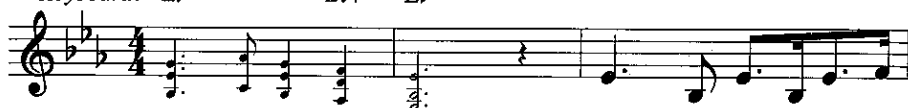


# I've Been Working on the Railroad

Traditional American Folk Song

With Vigor

Gtr. capo 1: D                      A7            D  
 Keyboard: Eb                      Bb7        Eb



I've been work-ing on the



rail - road, all the live-long day. I've been work-ing on the



rail - road, just to pass the time a - way. Can't you hear the whis-tle



blow - in'? Rise up so ear-ly in the morn. Can't you hear the cap-tain



shout - in', "Di - nah, blow your horn?" Di - nah, won't you blow,



Di - nah, won't you blow, Di - nah, won't you blow your horn?\_\_\_\_\_

<sup>2</sup> D  
E $\flat$

horn? Some - one's in the kit - chen with Di - nah,

A  
B $\flat$       D  
E $\flat$       D7  
E $\flat$ 7

some - one's in the kit - chen I know. Some-one's in the kit-chen with

G  
A $\flat$       A  
B $\flat$       D  
E $\flat$

Di - nah, strum - min' on the old ban - jo and sing - in', "Fee, fi,

A  
B $\flat$       D  
E $\flat$

fid-dle-ee - i - o, Fee, fi fid-dle-ee - i - o, Fee - fi,

G  
A $\flat$       A  
B $\flat$       D  
E $\flat$

fid-dle-ee - i - o," strum - min' on the old ban - jo."